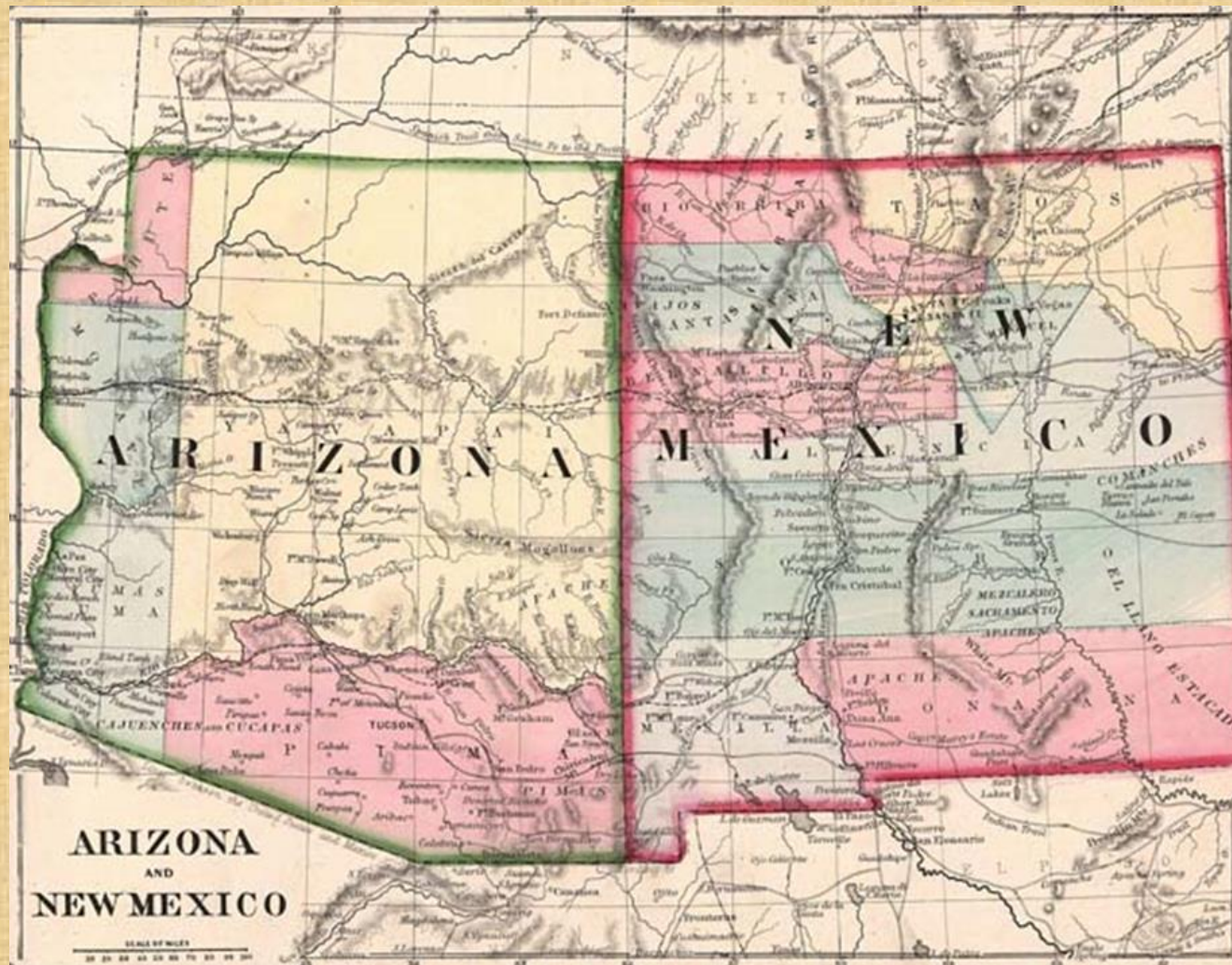


A close-up photograph of a fire hose reel in a fire station. The reel is made of metal and has a white fire hose coiled around it. In the background, a red fire extinguisher is visible on a wall. The scene is lit with warm, orange light, creating a dramatic atmosphere.

National Hall of Flame
Presents

**FIRE SERVICE
IN ARIZONA**

THE EARLY DAYS . . .



The Bucket Brigade



Hand Drawn/ Hand Powered Pumpers



Flagstaff Fire Department



Steam Powered Horse Drawn Pumper



Tombstone Historic Fire Station



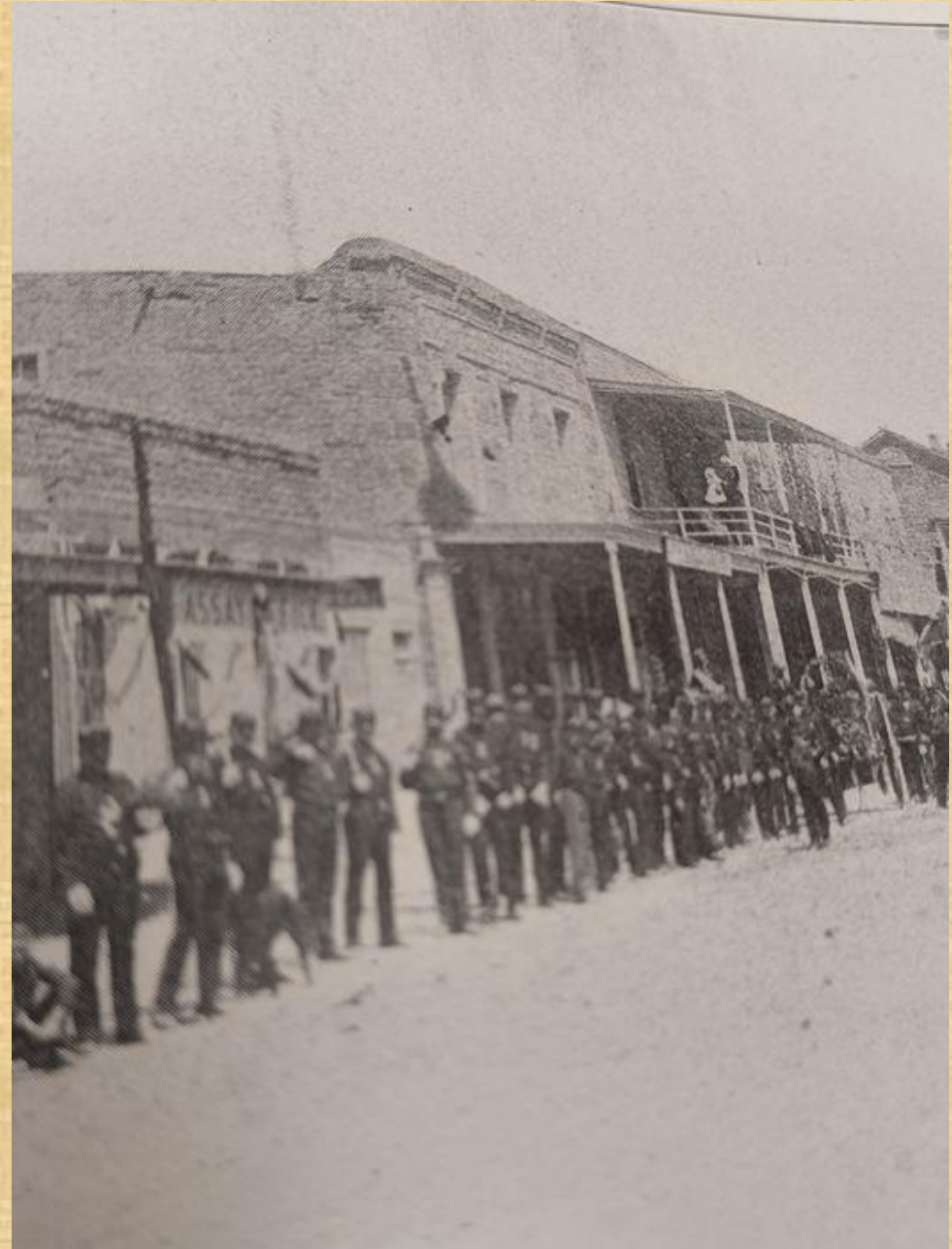
Tombstone Fire Department



Aftermath of Tombstone Fire, 1881



Tucson's Volunteer Fire Brigade 1881



Yuma Volunteer Fire Department Hose Cart Team



Yuma's Fire Chief



JOHN BUCK
Chief Yuma Fire Department
1880 to 1905

Bisbee Fire 1905



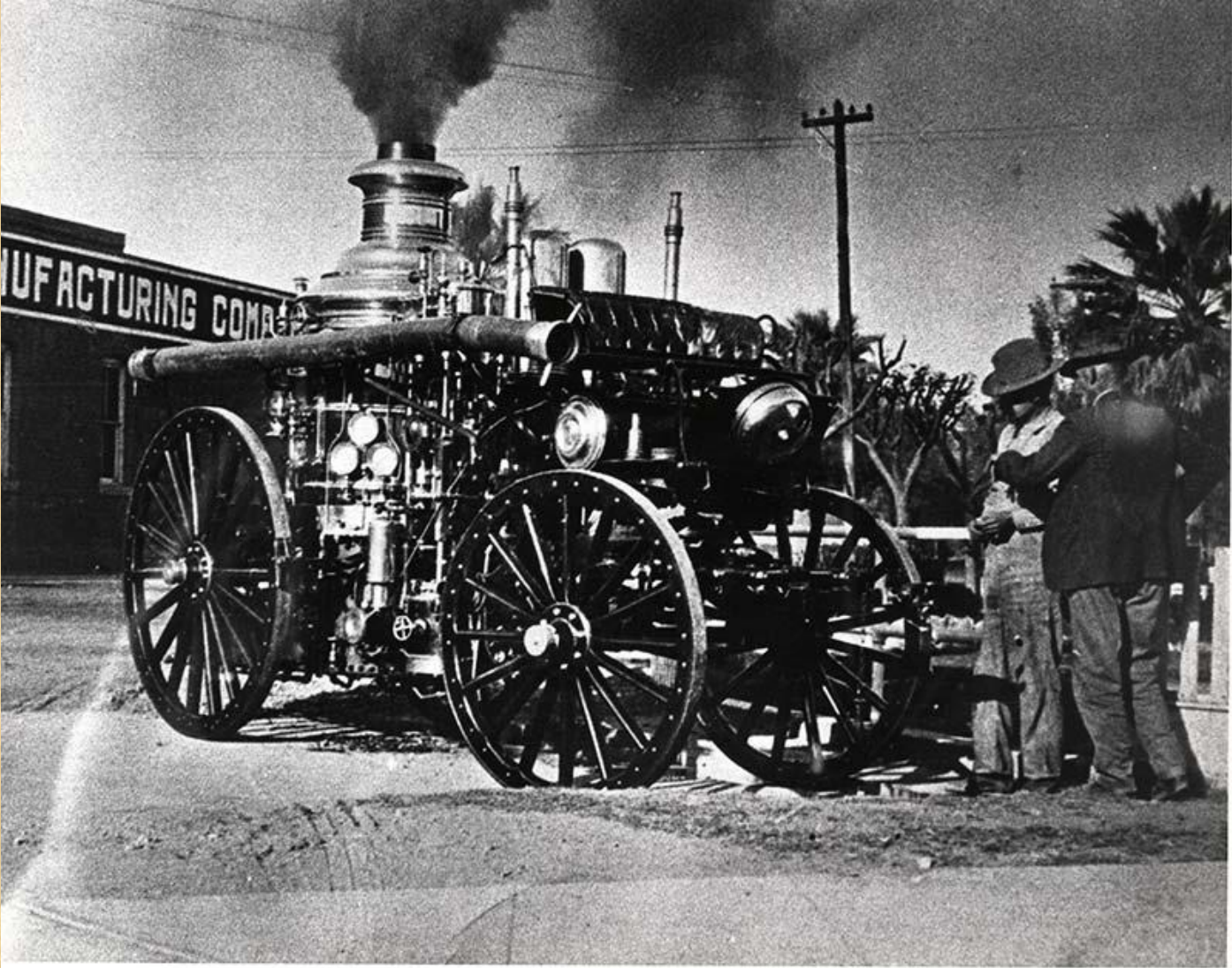
Bisbee Fire Aftermath



1915 Robinson from Globe, later Gila Bend



Phoenix Fire Department



Phoenix 1908



1921 Phoenix Seagrave



Phoenix Fire Dept
1921 Seagrave



1957 Van Pelt from Mesa



1957 Van Pelt from Timberline/Fernwood



Phoenix Call Center, 1956-1982



1973 Seagrave; Benson



Gray Crabtree



Alan Brunacini



Granite Mountain Transport Buggy



Arizona Fire Service Hall of Fame



Come and visit us!

